

UNIT, DIRECT SUPPORT, AND GENERAL SUPPORT MAINTENANCE  
REPAIR PARTS AND SPECIAL TOOLS LIST  
TRUCK, 5-TON, 6X6, M809 SERIES TRUCKS (DIESEL)

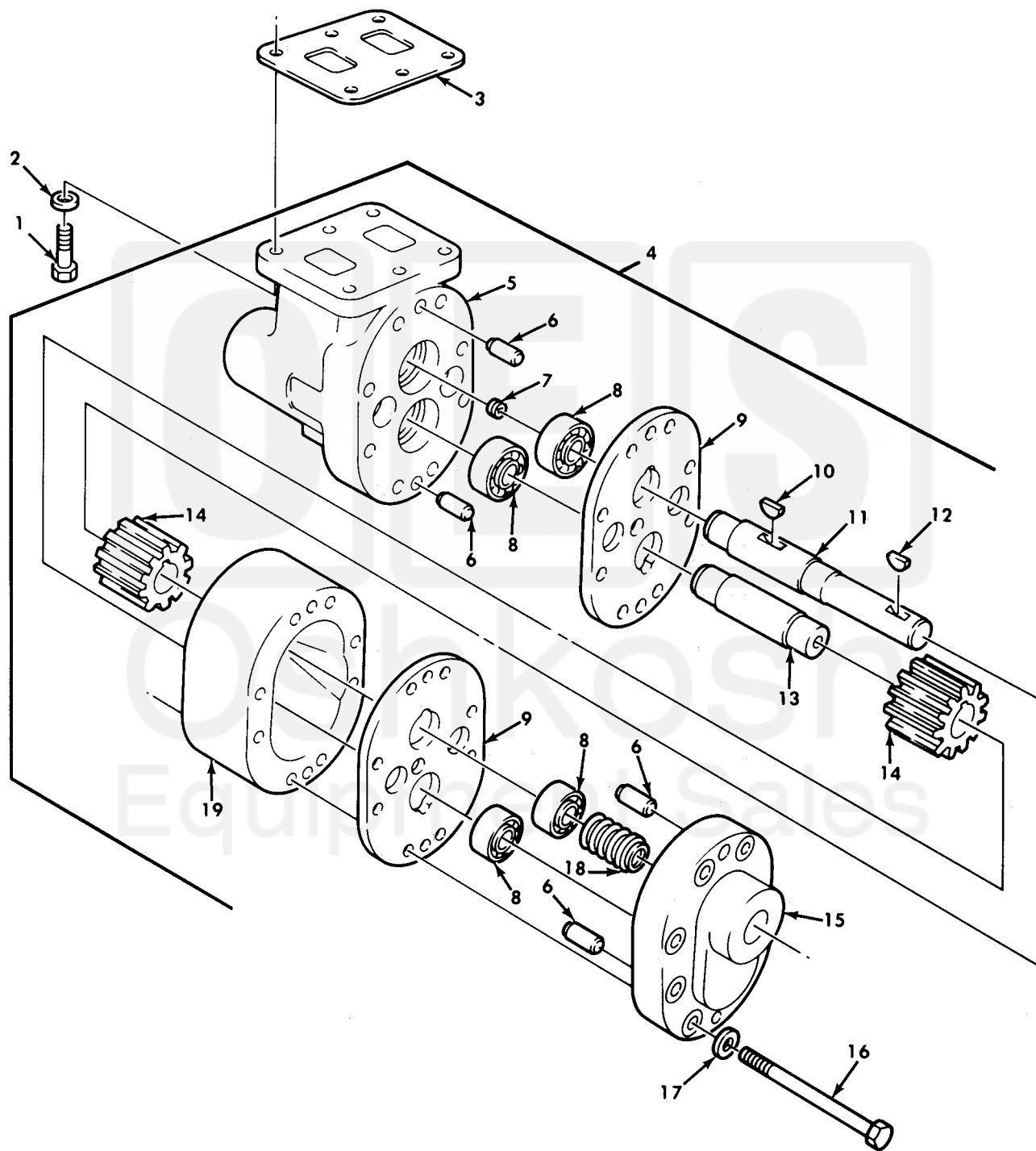


Figure 379. Dump Hoist Pump Assembly and Mounting Hardware.

(1) ITEM NO	(2) SMR CODE	(3) NSN	(4) CAGEC	(5) PART NUMBER	(6) DESCRIPTION AND USABLE ON CODE (UOC)	(7) QTY
GROUP 2001 HOIST, CRANE, OR WINCH ASSEMBLY						
FIG. 379 DUMP HOIST PUMP ASSEMBLY AND MOUNTING HARDWARE						
1	PAFZZ	5305-00-915-8087	11083	1J5999	SCREW, CAP, HEXAGON H. . . . . UOC: 627, 633	6
2	PAFZZ	5310-00-584-5272	96906	MS35338-48	WASHER, LOCK. . . . . UOC: 627, 633	6
3	PAFZZ	5330-00-242-5587	19207	7409082	GASKET DUMP HOIST PUMP COVER. . . . . UOC: 627, 633	1
4	PAFFF	4320-00-040-2318	19207	8330480	PUMPING, UNIT HYDRAL. . . . . UOC: 627, 633	1
5	PAFZZ	5340-00-301-7739	19207	8330482	.COVER, ACCESS. . . . . UOC: 627, 633	1
6	PAFZZ	5315-00-058-9949	19207	589949	.PIN, STRAIGHT, HEADLE. . . . . UOC: 627, 633	4
7	PAFZZ	4730-00-018-9566	81348	WW-P-471ACABCA	.PLUG, PIPE. . . . . UOC: 627, 633	1
8	PAFZZ	3110-00-554-3925	18876	10599814-1	.BEARING, BALL, ANNULA. . . . . UOC: 627, 633	4
9	PAFZZ	2530-00-586-1761	19207	8328153	.PLATE, WEAR. . . . . UOC: 627, 633	2
10	PAFZZ	5315-00-012-4553	96906	MS35756-17	.KEY, WOODRUFF. . . . . UOC: 627, 633	1
11	PAFZZ	3040-00-318-0978	19207	8330484	.SHAFT, SHOULDERED. . . . . UOC: 627, 633	1
12	PAFZZ	5315-00-616-5520	96906	MS35756-14	.KEY, WOODRUFF. . . . . UOC: 627, 633	1
13	PAFZZ	3040-00-318-0979	19207	8330485	.SHAFT, SHOULDERED. . . . . UOC: 627, 633	1
14	PAFZZ	3020-00-287-8212	19207	8330483	.GEAR, SPUR. . . . . UOC: 627, 633	2
15	PAFZZ	5340-00-532-9054	19207	8328151	.COVER, ACCESS. . . . . UOC: 627, 633	1
16	PAFZZ	5305-00-071-2063	80204	B1821BH044C400N	.SCREW, CAP, HEXAGON H. . . . . UOC: 627, 633	8
17	PAFZZ	5310-00-809-4085	96906	MS27183-16	.WASHER, FLAT. . . . . UOC: 627, 633	8
18	PAFZZ	2590-00-593-1853	19207	8328155	.PARTS KIT, SEAL REPL. . . . . UOC: 627, 633	1
19	PAFZZ	4320-01-101-8360	19207	8330481	.BODY, HYDRAULIC PUMP. . . . . UOC: 627, 633	1

END OF FIGURE